



SWIF *TEN* RACKING SYSTEM SYSTEM OVERVIEW

SWIF Rack LLC
2850 Industrial Avenue
Hubbard, OR 97032
MAIN: (541) 490-0536
INFO@**SWIFRACK**.com
SUPPORT@**SWIFRACK**.com
SALES@**SWIFRACK**.com

CLASS A FIRE RATING  UL 2703 CERTIFIED  25-YEAR WARRANTY

www.**SWIFRACK**.com
20260107

SWIF *TEN* RACKING SYSTEM

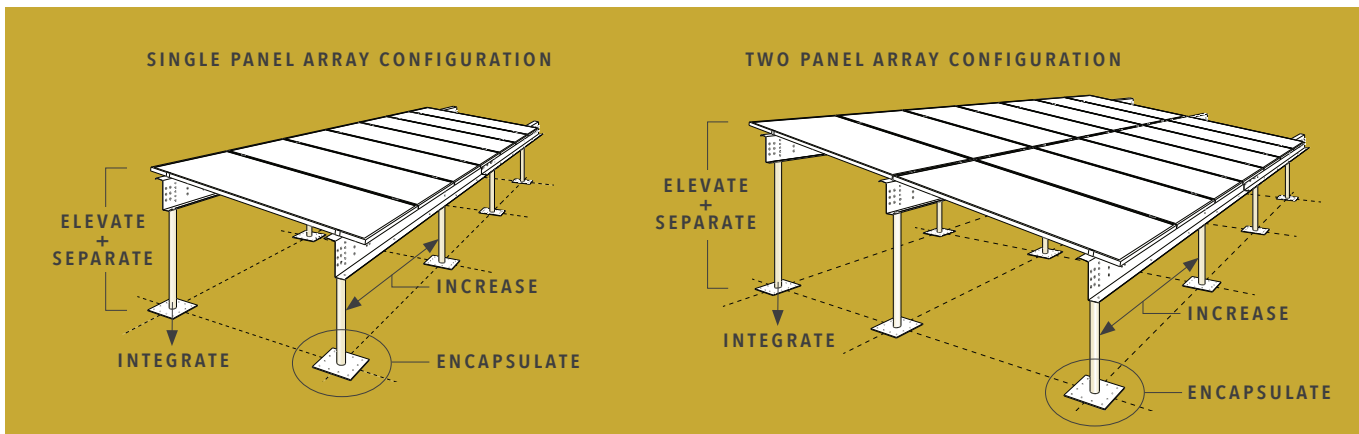
- ✓ **UL 2703 CERTIFIED**
- ✓ **CLASS A FIRE RATING**
- ✓ **25 YEAR WARRANTY**
- ✓ **MADE IN THE USA**
- ✓ **IMPROVES BIFACIAL MODULE OUTPUT**
- ✓ **PREVENTS PV RELATED ROOF DAMAGE**

Improve your Commercial Rooftop Solar Installation with SWIF Rack's Patent Pending SWIF *TEN* Solar Racking System created by a roof expert for flat and low-slope commercial roofs. SWIF *TEN* Solar Racking is designed to increase the earning potential of your PV system and maximize the lifespan of your roof and solar investments. Our solution distinguishes itself through Tailored Structural Connections, Optimized Accessibility and by our Compatibility with Existing Roofing Product Manufacturer Approved Details.

SWIF *TEN* Solar Racking increases rooftop solar profitability by up to 50% by protecting roofs from PV system overburden and by enabling roof maintenance, repair and full roof replacement while enabling continuous system operation. SWIF Rack's integrated SWIF supports connect the PV installation directly to your building's structural framework to maintain a seamless roof surface. Our positive attachment method includes specifications for steel, wood and concrete construction types. Furthermore, the SWIFs elevate PV panels high above the roof without cross bracing to maximize roof accessibility. Robust SWIF configurations support long span RAIL options that minimize the quantity of roof penetrations.



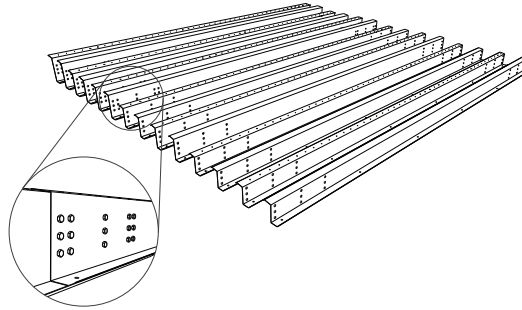
Elevating the system has other benefits as well. Bifacial panels gain access to more reflected sunlight that increases their power output by as much as 20%. Electricians appreciate the uncommon experience of completing their work in the shade of the array using the integrated wire management tray to keep cables organized and off the surface of the roof with no additional parts needed. Most critically, our system allows for roof replacement and upgrades without the hassle and expense of uninstalling the PV system, paving the way for extended energy generation that prioritizes a building's longevity and efficiency.



SWIF TEN RACKING SYSTEM

RAILS

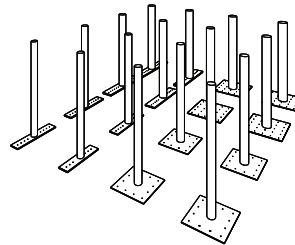
- Hot Rolled Steel, 55 KSI, per ASTM A653
- Prime Galvanized G90
- Cold Formed Profile with 10° Integrated Slope
- Engineered RAIL SPLICE Connection Details
- Integrated Wire Management Tray
- Custom Lengths for Every Project



- PART #S**
- 0616 XX'-XX"
 - 0614 XX'-XX"
 - 0814 XX'-XX"
 - 0812 XX'-XX"
 - 1014 XX'-XX"
 - 1012 XX'-XX"
 - 1212 XX'-XX"

SWIFS

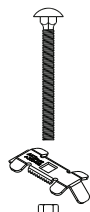
- Hot Dipped Galvanized per ASTM A-123
- PFAS Free Closed Cell Foam Fill
- System Attachment and Elevation via a Single Component
- Custom Attachment Styles for Different Building Types
- Structurally Integrated Building Connection



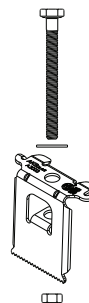
- | PART #S | PART #S |
|--------------------|--------------------|
| 20_WF_36/45/48/60 | 20_WD_36/45/48/60 |
| 25_WF_36/45/48/60 | 25_WD_36/45/48/60 |
| 30_WF_36/45/48/60 | 30_WD_36/45/48/60 |
| 35_WF_36/45/48/60 | 35_WD_36/45/48/60 |
| 20_LGP_36/45/48/60 | 20_CD_36/45/48/60 |
| 25_LGP_36/45/48/60 | 25_CD_36/45/48/60 |
| 30_LGP_36/45/48/60 | 30_CD_36/45/48/60 |
| 35_LGP_36/45/48/60 | 35_CD_36/45/48/60 |
| 20_PCD_36/45/48/60 | 30_PCD_36/45/48/60 |
| 25_PCD_36/45/48/60 | 35_PCD_36/45/48/60 |

MID + END CLAMPS

- 316 Stainless Steel
- Bond Modules + RAILS
- MIDCLAMP ASSEMBLY Resists Rotation for One-Hand Install
- ENDCLAMP ASSEMBLY Depth Options for Different Module Frame Types



- PART #S**
- M20
 - M25
 - M30



- PART #S**
- E30_20
 - E35_20
 - E40_25
 - E45_30
 - E50_30

GROUNDING LUG

- Includes All Hardware
- Accepts 4-12 AWG Solid Copper Conductors

- PART #S**
- AH010



SELF DRILLING BOLT

- RAIL to SWIF Fastener
- TEKS 4 Drill Point
- ASTM B117 Corrosion-Resistant Finish

- PART #S**
- TKS1420



SPLICE BOLT

- RAIL SPLICE Fastener
- 316 Stainless Steel

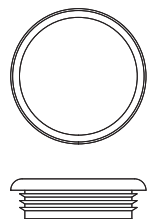
- PART #S**
- SB05



SWIF CAP

- Ribbed Secure Fit
- Gasket for Improved Seal

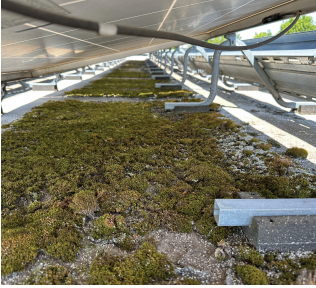
- PART #S**
- SC_15/20/25
 - SC_30/35/40





CHALLENGES TO EXISTING RACKING SYSTEMS

CHALLENGES WITH BALLASTED SYSTEMS



1. Roof Replacement is Usually Required for Installation
2. Heavy Load Causes Premature Roof Damage
3. Low Profile and Large Contact Areas Impede Access for Roof Maintenance
4. Need for Panel and Ballast Removal During Roof Repairs
5. Increased Roof Repair and Replacement Costs
6. Premature Decommissioning Risk
7. High Total Cost of Ownership



CHALLENGES WITH EXISTING MECHANICALLY ATTACHED SYSTEMS



1. Roof Replacement is Often Required for Installation
2. Lots of Penetrations
3. Low Profile and/or Cross-bracing Impedes Access for Roof Maintenance
4. Need for Panel Removal During Roof Repairs
5. Increased Roof Repair and Replacement Costs
6. Premature Decommissioning Risk
7. High Total Cost of Ownership



HOW SWIF *ELEVATES* SOLAR INSTALLATION

✓ NO ROOF REPLACEMENT REQUIREMENT

✓ ELIMINATES ROOF DAMAGE CAUSED BY OVERBURDEN

✓ ELEVATED FOR EASY ROOF MAINTENANCE



✓ ROOF WORK DOES NOT INTERFERE WITH PV SYSTEM OPERATION

✓ PV SYSTEM LONGEVITY IS NOT LIMITED BY ROOF PERFORMANCE

✓ INCREASES PV OUTPUT BY MAXIMIZING ACCESS TO REFLECTED SOLAR

CLASS A FIRE RATING / UL 2703 CERTIFIED / 25-YEAR WARRANTY

www.SWIFRACK.com
20260107